

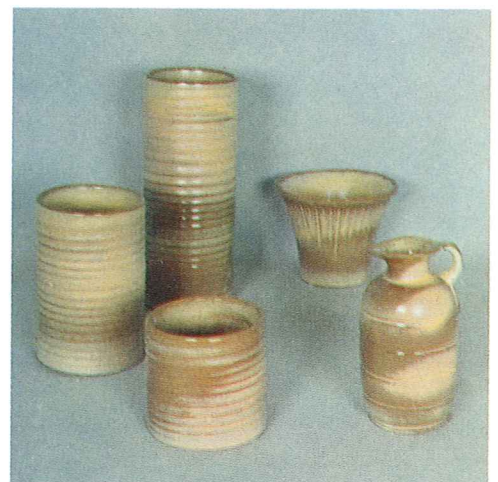
FRANKOMA COLOR CHART



BROWN SATIN



PRAIRIE GREEN



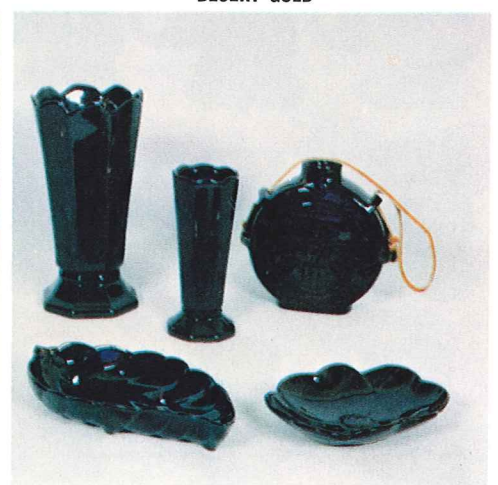
DESERT GOLD



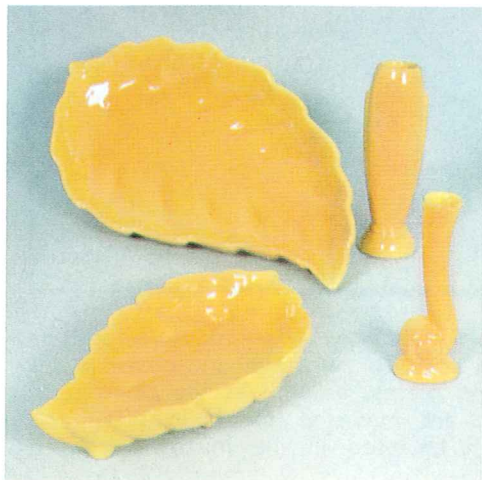
TERRA COTTA



WHITE SAND



ONYX BLACK



AUTUMN YELLOW



ROBIN EGG BLUE



FLAME

Frankoma has been 47 years developing shapes, colors, textures, glazes, types of Artware, and unique tableware, peculiar only to itself. We are CREATORS, never satisfied with the ordinary, or to just make cheaper what has already been done.

The body is unique, brick-red earthenware, basically from a local shale, combined with other earths, properly screened and aged. It is "once-fired" to about 2000° Fahrenheit, and carefully tempered when cooling to make it oven-proof, shock and chip resistant—built to "take it" in daily use.

The colors are all created and ground in our own laboratory. The color of the body is used as an undercolor for our unique two-tone effects. The rich vellum textures are lovely to touch, and are produced only by patient care in preparation and hours of proper cooling. **No one produces THESE glazes but Frankoma.** Tell your customers that—they will be delighted to know. They will be pleased that YOU know what you are talking about!